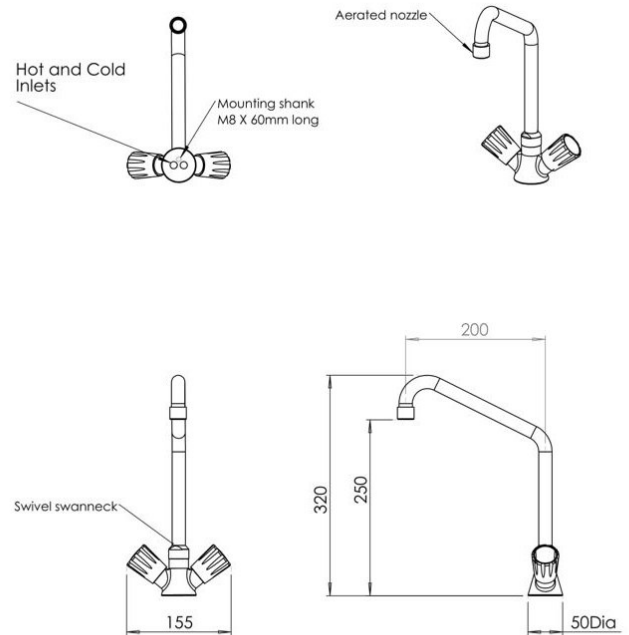


Monobloc Mixer Laboratory Tap



Supplied with two inlet stainless steel hoses 300mm long
 3/8" BSP female connections
 Maximum mounting surface thickness 40mm

Product Code: ARB-MLBTAP

The monobloc mixer laboratory tap features a movable swan neck with an aerator nozzle, which introduces air into the water to create a gentler flow and reduce splash back, this durable tap is ideal for schools and laboratories.

It is constructed with a solid brass body and swan neck, coated in Ral 9016 white Rilsan plastic and equipped with grey ABS rotating handwheels.

Delivery

From stock usually 3 to 5 working days

Tech Spec

3 x 3/8" BSP female flat ended flexible braided SS hose, 330mm long

1 x 30mm tap hole required

Maximum pressure: 100PSI (Recommended 20PSI)

Flow rate: 20PSI = 35 Liter/min

**All pictures shown are for illustration purpose only and may be subject to change without notice. Actual product may vary due to product enhancement.

All dimensions shown are for guidance only and may be subject to change or alteration without notice. All items manufactured or purchased separately from a third party to fit our products should be checked against the actual dimensions of the physical product before purchase. We will not be liable for third party costs and consequential loss associated with the items not fitting third party components.**